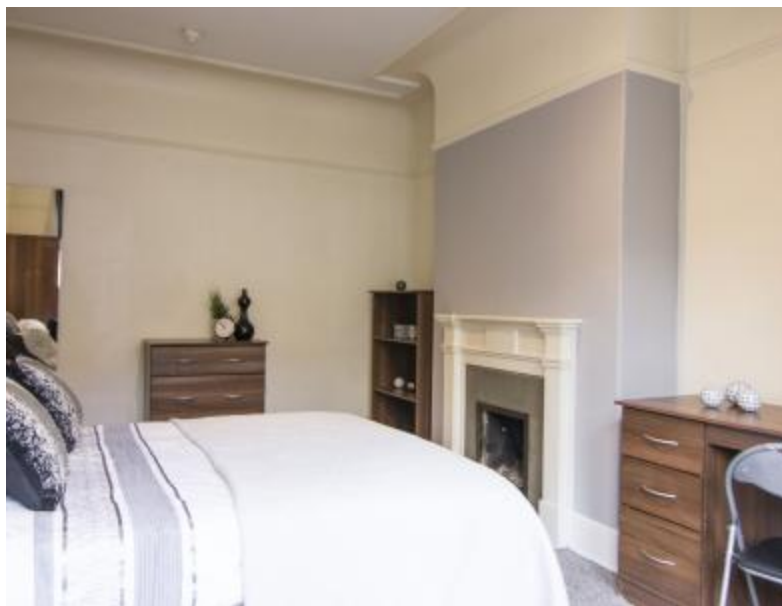




# 5 BED HOUSE

**ADDRESS****8 GROVE GARDENS, FAR HEADINGLEY, LS6 4EG****RENT****£83.99 PPPW PPPW | £99.99 PPPW ALL INC  
ALL INC**

\*\*\* £83.99 P.P.P.W \*\*\* - 5 good size double bedrooms - Great leafy suburb - 5 minutes walk to Headingley Arndale Centre (Sainsbury's). Set over four floors, this property is in a beautiful area, just a couple of minutes walk to all the facilities Headingley has to offer. All bedrooms are of a good size and are fully furnished. You won't be short on space in this property, as there is a spacious living room with large flat screen TV and kitchen, main bathroom with a gorgeous roll top bath plus separate shower room. There is even an additional storage/laundry area in the basement. This property is in an excellent location for students as it is situated near the Universities and is also close by to Headingley and Leeds city centre.



To make this house your home, come in and speak to a member of our team  
Or visit our website at [parklaneproperties.com](http://parklaneproperties.com)