

Retail - North Lane - LS6 3HW



£12,000 Per Annum

Property Type: Retail

Tenure: leasehold

Current Useage: Retail

Useage Consent: A1

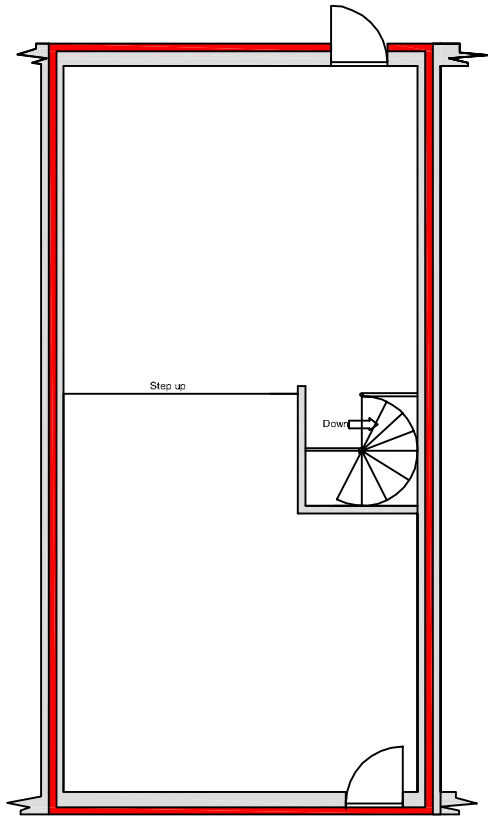
Square Footage: 550sq ft

31 North Lane

NOW LET - SUBJECT TO CONTRACT

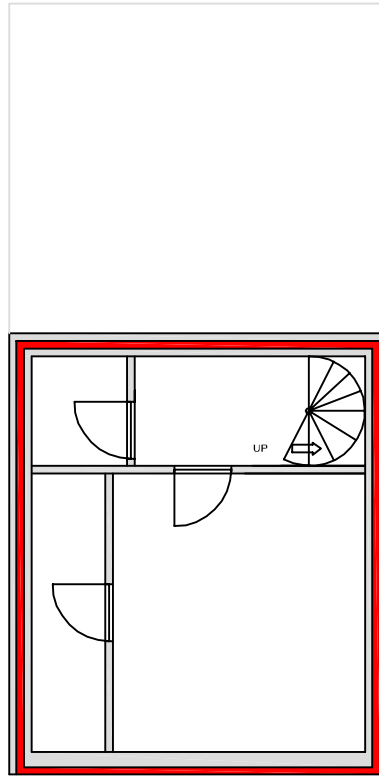
- High street retail unit
- Situated on a busy shopping parade in the centre of Headingley.
- Headingley is a vibrant suburb of Leeds about 3 to 4 miles from the city centre on a main arterial route with residential properties encompassing a busy shopping and commercial centre.
- Well fitted out sales area
- Assignment of lease/Under lease
- Viewing will be arranged with a third party

Call Parklane on 0113 230 5629



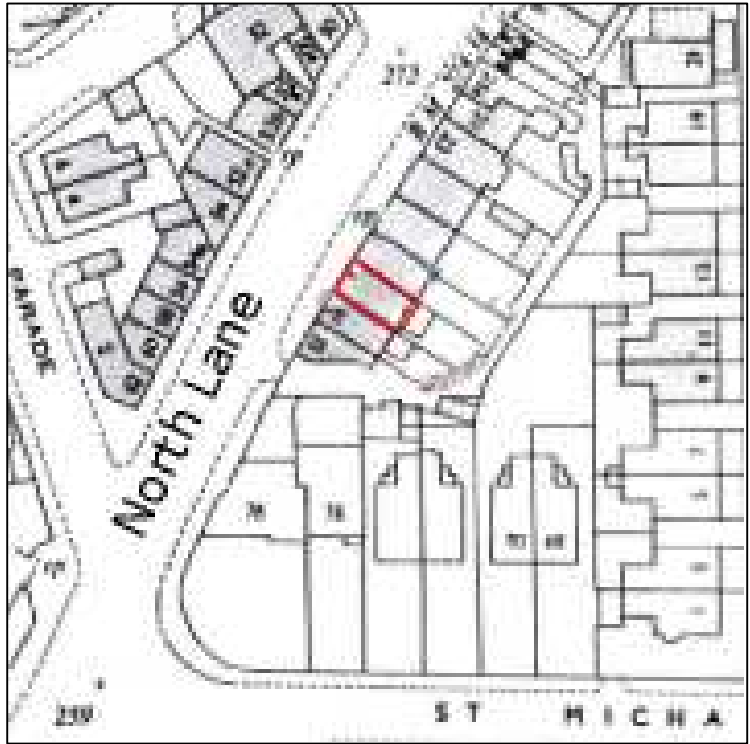
Ground Floor

Floor Plan 1:100




Cellar

Location Plan 1:1000



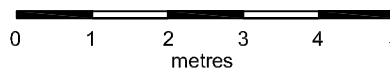
31 North Lane, Headingley, Leeds

 Indicates Line Of Demise of Lease Area

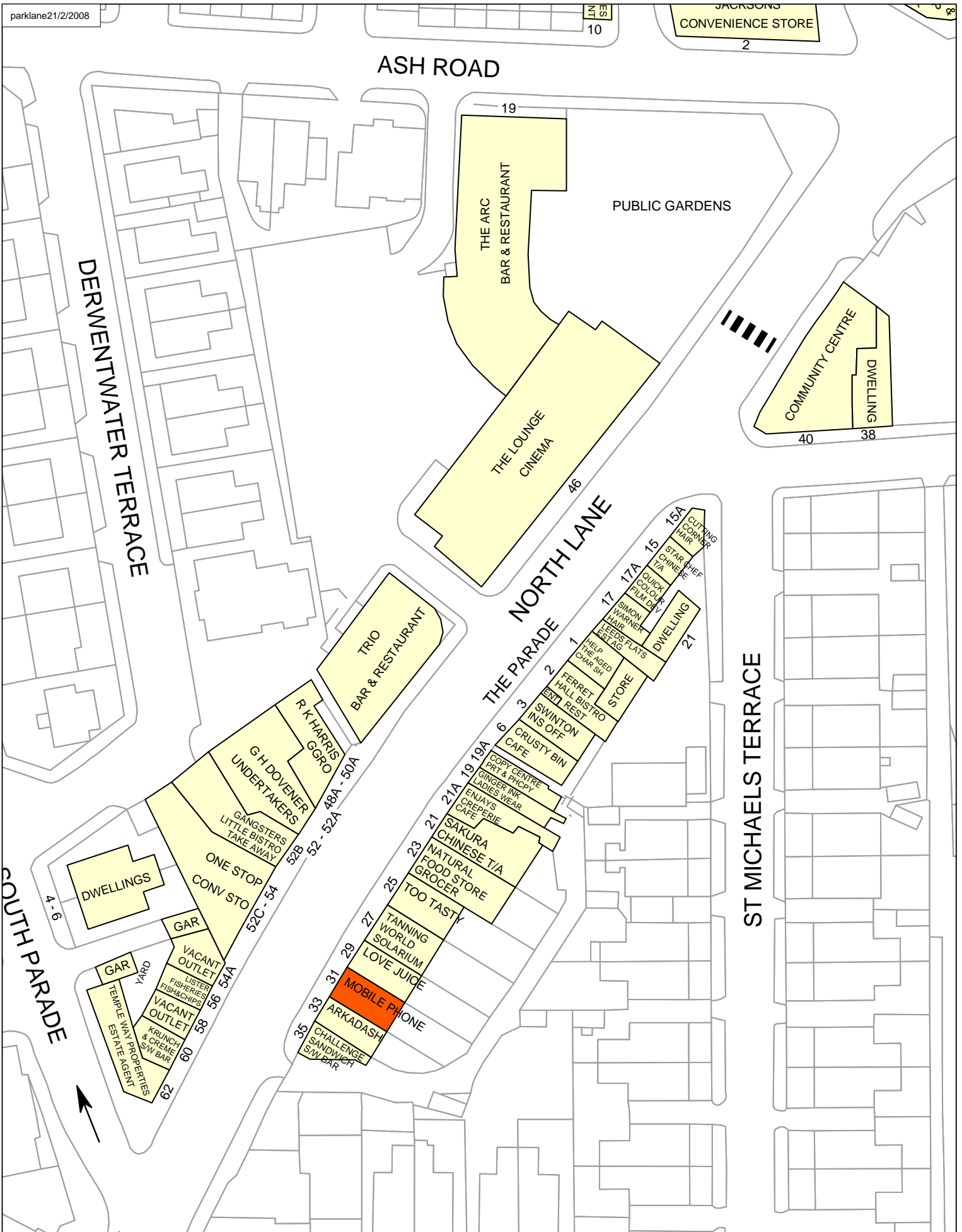
Scale 1:100

Approximate Gross Internal Area: 64 sq m / 691 sq ft

Originally presented at scale 1:100 (prints on A4), October 2009



parklane21/2/2008



goad For more information on our products and services:
www.goadplans.co.uk
 0845 6016011
goad.sales@uk.experian.com

COPYRIGHT AND CONFIDENTIALITY NOTICE
 2007 Experian Ltd All Rights Reserved
 This product includes mapping data licensed from Ordnance Survey © Crown Copyright 2007. Licence number PU 100017316.

 For full terms & copyright conditions visit www.goadplans.co.uk

