

A1 retail , coffee shop etc - Otley Road - LS6 2AD



£22,000 Per Annum

Property Type: Retail

Tenure: freehold

Current Useage: A1 retail , coffee shop etc

Useage Consent: A1

10a Otley Road

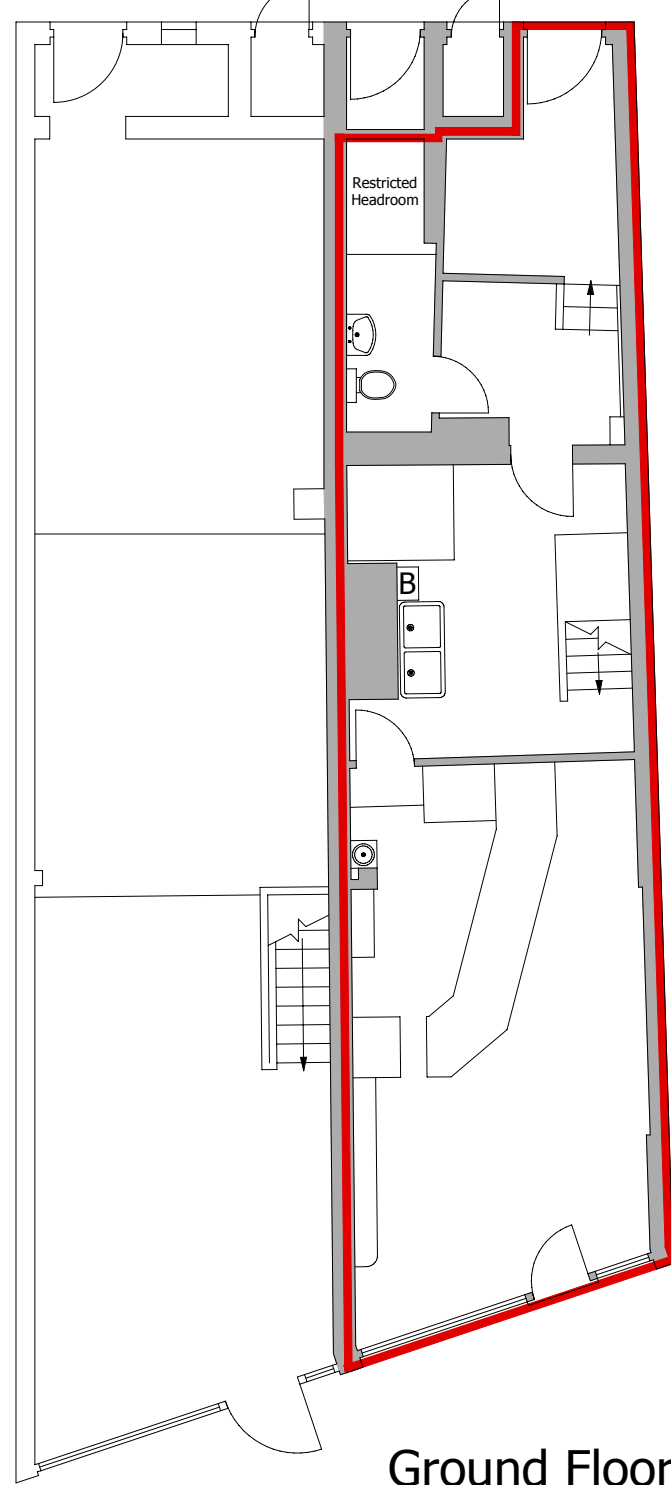
Available February 2011 or sooner as surrender of current lease is possible. .

Please contact Parklane for details.

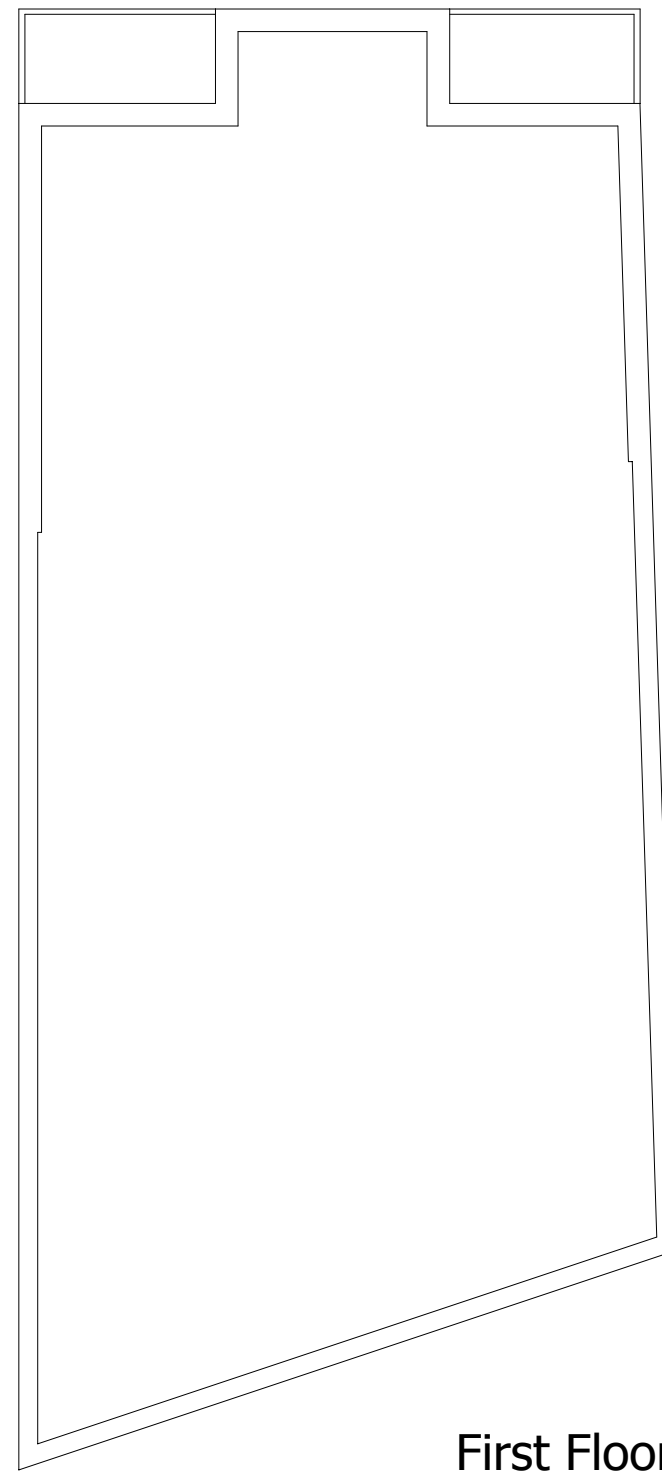
Relative Extent Of Ground Floor As Shown



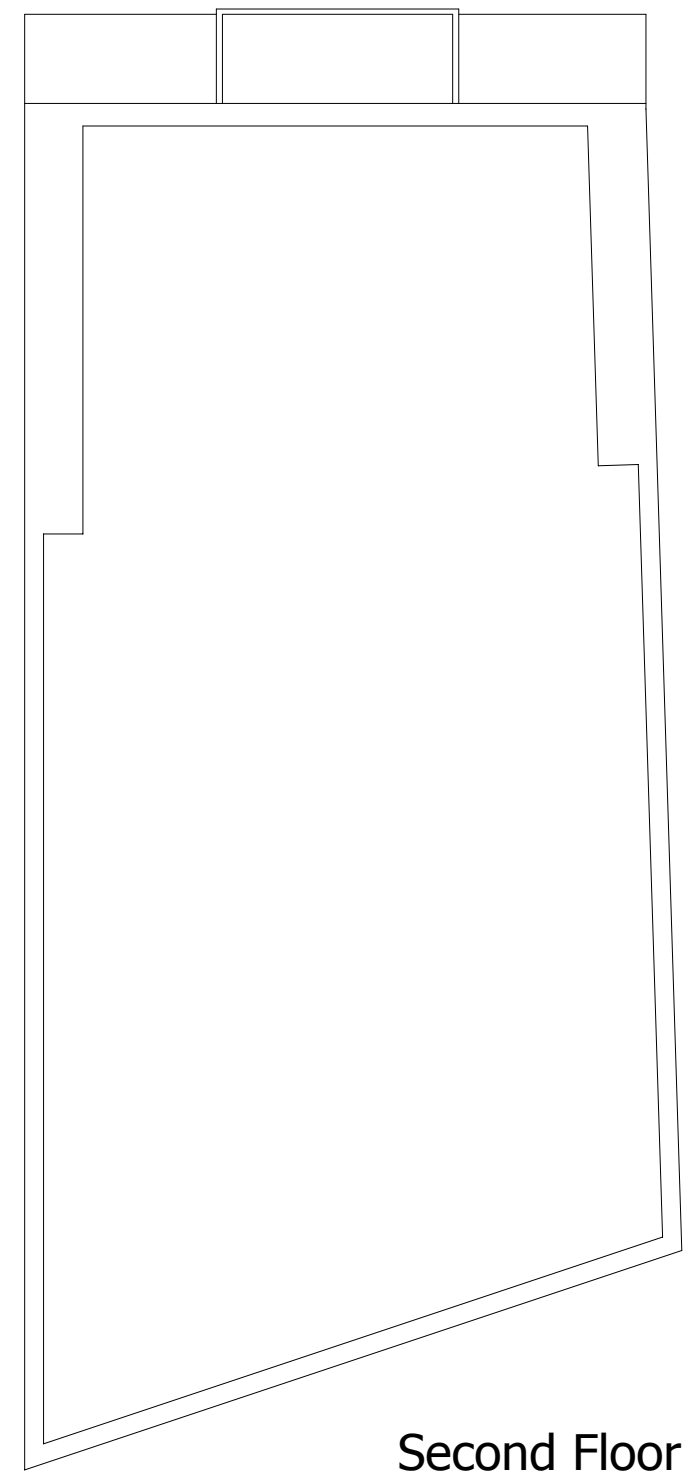
Cellar



Ground Floor

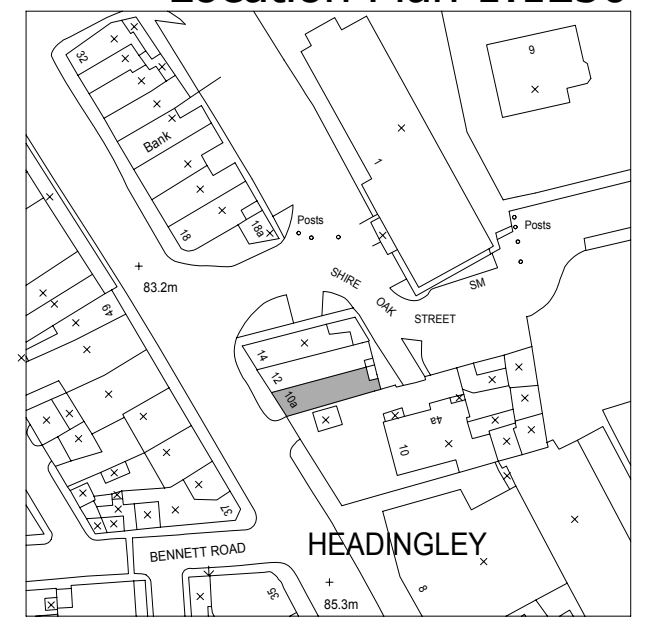


First Floor



Second Floor

Location Plan 1:1250



10a Otley Road, Headingley, Leeds

Approximate Gross Internal Area: 99 sq m / 1068 sq ft

Originally presented at scale 1:100 (prints on A3), October 2008

 Indicates Line of Demise of Lease Area

